

General Detailed view

1. Where to find examples of Analysis

<https://drive.google.com/drive/folders/1YA8bB5N9clxtfXY0YZPwCzsSzYzuO8AF?usp=sharing>

2. This project should to run at least without any bugs on the following items and symbol extensions(example xauusd.i, xauusd.x, xauusd.m, etc)

- a. XAUUSD (Gold)
- b. XAGUSD (Silver)
- c. BTCUSD
- d. ETHUSD
- e. DE40/DAX40/GER40
- f. US30/USX30
- g. UK100
- h. USTECH
- i. EURUSD
- j. XBRUSD (Brent Oil vs US dollar)
- k. XNGUSD (Natural Gas vs US dollar)
- l. XTIUSD (Crude Oil vs US Dollar)

3. The project will be done in the following environments

- a. MQL4
- b. MQL 5
- c. Trading view (standard, free of use)

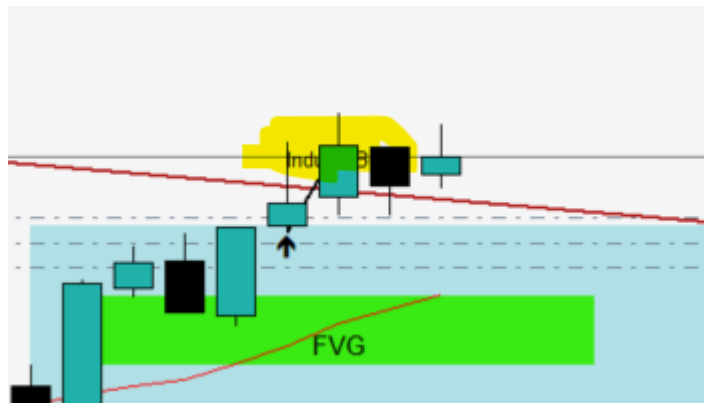
4. General requirements

- a. The EA should only create notifications on the specific chart when needed and stay for at least a time put in the notification parameters. (meaning that the notification disappear has a timer)
- b. Every chart item should have the following items to be changeable
 - i. Feature On/off: true/false
 - ii. Colour: selectable
 - iii. Text size: in points
 - iv. Direction text (left/right/bottom/upside of text)

c. This EA **will not use paying components of a third-party paying components** and is only property of me. Never any item can be used for other clients or own development

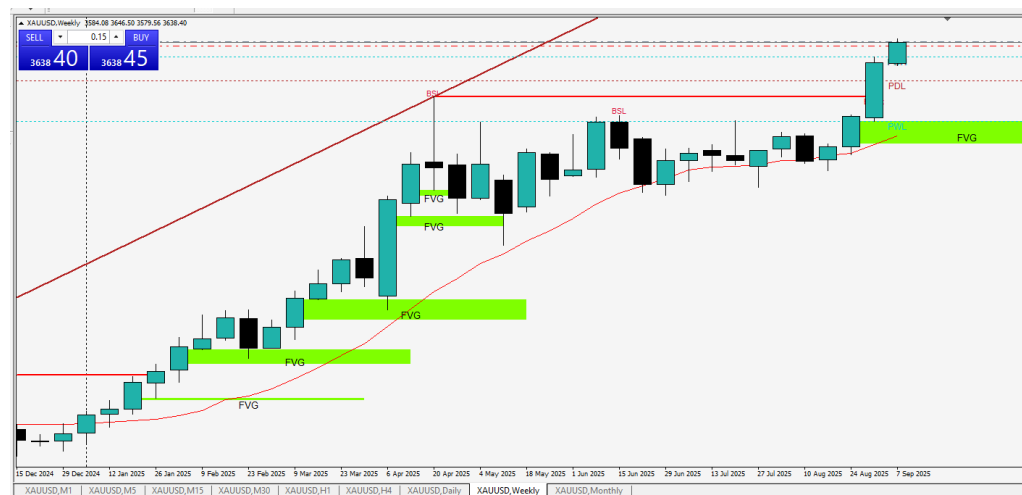
d. Colours

- i. Red candles for sell, sell resistance, etc
- ii. Text should be very good readable in boxes (colour should be changeable from box background to text colour)
- iii. Direction text (left/right/bottom/upside of text)
 1. See example of mistakes, not readable



- iv. Green candles for buy, buy support, etc
- v. No black background

1. Example of background



e. Flowchart/BPM Process

- i. The developer will provide clear Process flow and decision matrix in one of the following tools

1. **Opensource Software**

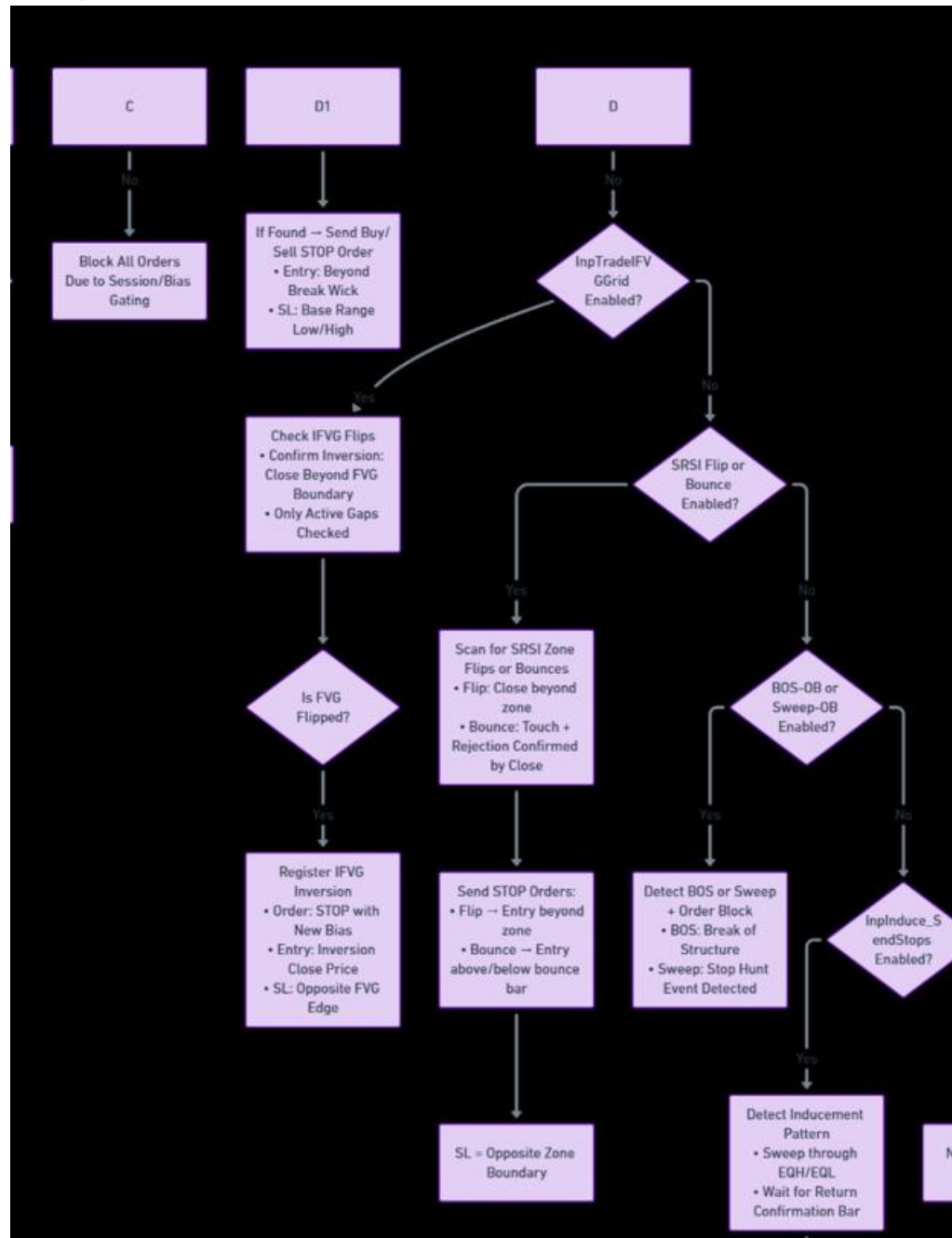
- a. Dia Diagram Editor, a desktop application with a large shape library

2. Or

3. Microsoft store

a. Sensus Business Process Modeler app for BPM

Example how I see a Flow Chart



5. Criteria/Validation of successful implementation

- The developer will not have access to the testing environment
- The developer will receive on regular bases the logs files of the demo accounts
- The developer needs to deliver clear installation documentation with print screens and in word documents

- d. The developer needs to document every case in a flow chart, how every scenario/case works (validation of entry model) and this needs to be delivered before acceptances.
- e. The developer will deliver the mql code and the trading view code with detailed explanation in the code how and why this is used.
- f. Any third-party software cannot be used.
- g. Any license model cannot be used
- h. Any limitation in time usage cannot be used
- i. **Parameters of success**
 - i. The solution works in Trading view with a standard license
 - ii. The solution works in MQL 4 with a standard license
 - iii. The solution works in MQL 5 with a standard license
- j. **Testing**
 - i. This is EA should/will run at **least 21 working days on 10 demo accounts and on the Symbols provided in the previous section** at the client side to proof that it works successfully.
 - ii. **Any bugs** will have as consequence that the testing period **starts again** from day 1 for the scenario/case and will also delay acceptance of the full development.
 - iii. **Back testing can be used to have a first check**, but the real test is on demo accounts and later a real account.
 - iv. I should be able to run this in back testing of MT4/5/Trading view

6. **Support**

- a. Any fixes, bugs are fixed within 48 hours and free of charge
- b. Support to any fixes, bugs are not limited in time and free of charge
- c. Developer will adequately provide any support on issues, fixes, bugs within 48 hours

7. **Mindset Agile Delivery**

- a. We like to Enphase that delivery will be split in separate small business value delivery
- b. We want that the developer works iteratively according to the agile-scrum principle
- c. This means that the build process is divided into mini projects (sprints) with the ultimate goal of periodic releases per concept that deliver value to key test user. We determine the content of these sprints together based on the functional priorities.
- d. After each sprint, the functionality is released to a client environment, and you demonstrate the delivered product with a demo.
- e. We strongly believe in interim releases per concept and agile development.
- f. This is to avoid issues at the end of delivery and makes validation much easier
- g. Each Concept will be delivered to me to be able to test thoroughly, at that moment the developer can work on the next case (the first concept will take longer to deliver as many enablers are in this)
- h. The source code is delivered to check the quality of the documentation in the code per sprint.

8. Chart should have the following items that are automatically created(basic screen)

a. Chart 1

- i. **Daily Chart indication of buy and sell zone**
- ii. **ICT kill zones (displaying different time zones)**
- iii. **Midnight Open (MO)**
- iv. **Daily high + Low (PDH, PDL)**
- v. **Weekly High + Low (WL, WL)**
- vi. **Monthly High+ Low (MH, ML)**
- vii. **All time High+Low (ATH, ATL)**
 1. It should be able to say how many days it needs to look back
- viii. **Equal EQLH + EQLL**
- ix. **Silver bullet (Colour shout be adaptable)**
- x. **Kill zones (+ indication opening low and high)**
- xi. **FVG**
 1. **FVG + (Green colour)** (settings how many candles it should take into account)
 2. **FVG – (Red Colour)** (settings how many candles it should take into account)
 3. **It should be visible to turn on and off FVG from a higher/lower timeframe**
- xii. **Trendlines** (settings how many candles it should take into account)
- xiii. **BSL, SSL**
- xiv. **EQL, EQH (including EQLs**
- xv. **RBR/RBD/DBD/DBR** (timeframes where this is active in, base max bars, break to pts, base to pts)
- xvi. **High impact news** (bar + Colour)

b. Chart 2

- i. **MACD 12/26/9**

c. Chart 3

- i. **RSI 14/70/30**

d. Chart 4

- i. **Data is indicative**
- ii. **View on price**

9. Planning Sprints

a. Chart 1

- i. Sprint 1 (Possible Timeframe should be M15, M30, H1, H4, Daily, Weekly)
 1. **The following sprint will serve as master**, which will have enabler/functions included (opening Chart, colour settings , communication box, etc) text per item,
 2. **Silver Bullet**
 - a. <https://www.youtube.com/shorts/jfWb8MsgFGg>
 3. **ICT kill zones (displaying different time zones)**
 - a. <https://www.youtube.com/shorts/W8SgFP3mBm0>
 4. **Swap Zones**

a. <https://www.tiktok.com/@drxsecretzone/video/7394622184372571397>

- ii. Sprint 2
 - 1. Daily Chart indication of buy and sell zone
- iii. Sprint 3
 - 1. Midnight Open (MO)
- iv. Sprint 4
 - 1. Daily high + Low (PDH, PDL)
- v. Sprint 5
 - vi. Weekly High + Low (WL, WL)
- vii. Sprint 6
 - viii. Monthly High+ Low (MH, ML)
- ix. Sprint 7
 - x. All time High+Low (ATH, ATL)
 - xi. It should be able to say how many days it needs to look back
- xii. Sprint 8
 - xiii. Equal EQLH + EQLL
- xiv. Sprint 10
 - xv. Trendlines (settings how many candles it should take into account)
- xvi. Sprint 11
 - xvii. BSL, SSL
- xviii. Sprint 12
 - xix. EQL, EQH (including EQLs)
- xx. Sprint 13
 - xxi. Inducement Sweep (settings for confirmation bars)
- xxii. Sprint 14
 - xxiii. RBR (timeframes where this is active in, base max bars, break to pts, base to pts)
- xxiv. Sprint 15
 - xxv. RBD (timeframes where this is active in, base max bars, break to pts, base to pts)
- xxvi. Sprint 16
 - xxvii. DBD (timeframes where this is active in, base max bars, break to pts, base to pts)
- xxviii. Sprint 17
 - xxix. DBR (timeframes where this is active in, base max bars, break to pts, base to pts)
- xxx. Sprint 18
 - xxxi. High impact news (bar + Colour)
- xxxii. Sprint 19
 - xxxiii. RB
- xxxiv. Sprint 20
 - xxxv. Sell side liquidity (including minor and high)
- xxxvi. Sprint 21
 - xxxvii. Buy side liquidity (including minor and high)
- xxxviii. Sprint 22
 - xxxix. Equal High Buyside Liquidity

- xl. Sprint 23
- xli. Equal Low Sell Side Liquidity
- b. Chart 2**
 - i. Sprint 24
- c. Chart 3**
 - i. Sprint 25
- d. Chart 4**
 - i. Sprint 26

Some examples how I see the screens (these should be followed)

Example of how I see the screen that I want, including the trendlines, MCAD, RSI, Price Trend

For me this has 4 chart zones.



